

AET BE2R Technical Details

SYSTEM SPECIFICATIONS

FOOTPRINT (CLASSIFIED AREA)

- Minimum 300SQ FT (28 SQ Meter)

ELECTRICAL REQUIREMENTS

- 480VAC or 240VAC 3PH

CAPACITY / PERFORMANCE

- Cooling: -40°F(-40C) at 17KW
- Extraction: 40 lbs(18kg) biomass / 35 gal(132L) ethanol
- Batch time: ~20 mins
- 98+% botanical extraction efficiency
- 98+% solvent recovery from biomass
- 98+% solvent recovery from oil

COMPONENT SPECIFICATIONS

CENTRIFUGE

- 1561 RPM, 900 G
- Food-Grade Shaft Seal
 - Includes Positive Pressure Barrier
- Vacuum jacketed basin
- Pneumatically operated lid and lid closures
- Operational Footprint: 55" (1.5M) x 32" (0.8M) x 40" (1M)

FILTRATION & FFE PROCESS SKID

- Operational Footprint:
 - 34"(1M) x 60"(1.5M) x 90"(2.25M) Skid

FOUR-STAGE FILTRATION

- Pre-filtration
- Micron level particulate removal
- Color remediation
- Final stage particulate filtration
- Sight glasses between stages

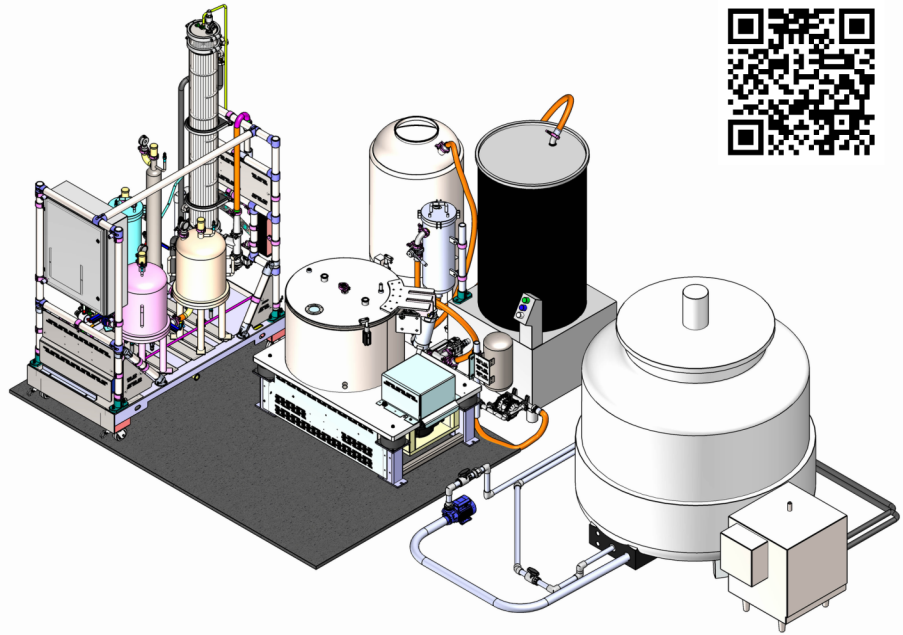
FALLING FILM EVAPORATOR

- FFE Efficiency: 98%
- FFE Recovery Rate: 90 GPH
- FFE Operational Temperature:
 - 200°F to 210°F

ANCILLARY EQUIPMENT

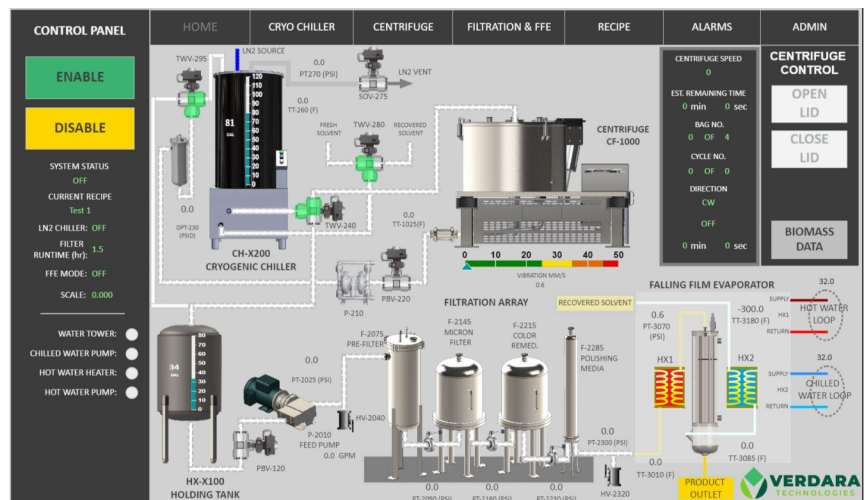
THE FOLLOWING EQUIPMENT IS SELECTED BASED ON SITE CONDITIONS, AND REQUIRED TO OPERATE THE SYSTEM

- Ethanol Chiller (C1D2) - LN2 or Mech.
- Water Heater and Pump (SAFE SPACE)
- Water Chiller and Pump (SAFE SPACE)



FEATURE LIST:

- ✓ PLC/HMI Control System with Touchscreen
- ✓ Rated Electrical Equipment
- ✓ Solvent Feed and Recovery Tanks
- ✓ Low Maintenance and Operational Costs
- ✓ Remote Monitoring and Logistics
- ✓ Custom "Recipe" Creation



WHO WE ARE

At AET, we provide high yield plant-based processing and extraction solutions for the botanical extraction industry.

ABILITYENGINEERING.COM

CONTACT OUR EXPERTS

708.331.0025 | sales@abilityengineering.com

2022 © Ability Engineering Tech., Inc. All Rights Reserved